

## T-SHIRT TO TOTE PROJECT



Plastic bags are commonly found in trees along the Red River, and collecting these bags for proper disposal is often difficult. In addition, it takes hundreds of years for a plastic bag to degrade in the landfill.

### SIMPLE WAYS TO REDUCE PLASTIC BAG USE

- Make your own bag by putting old T-shirts to use. See pattern provided on back.
- Volunteer to cut, tie, sew or label T-shirts into totes for River Keepers T-shirt to Tote Project. Totes are used for projects, outreach, education and as an alternative option for customers at local stores.
- Donate family friendly T-shirts in good condition to River Keepers T-shirt to Tote Project.
- Use cloth or paper bags when shopping.
- Reuse plastic bags as many times as possible.
- Use long lasting reusable containers instead of disposable bags.
- Recycle plastic bags at recycling bins.



## T-SHIRT TO TOTE PROJECT



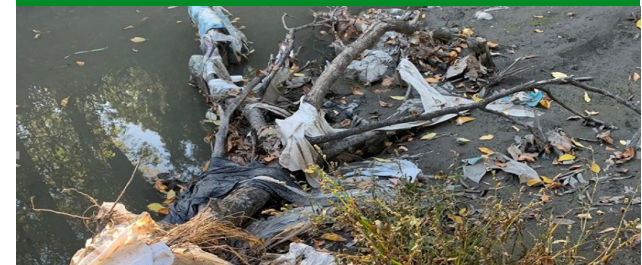
Plastic bags are commonly found in trees along the Red River, and collecting these bags for proper disposal is often difficult. In addition, it takes hundreds of years for a plastic bag to degrade in the landfill.

### SIMPLE WAYS TO REDUCE PLASTIC BAG USE

- Make your own bag by putting old T-shirts to use. See pattern provided on back.
- Volunteer to cut, tie, sew or label T-shirts into totes for River Keepers T-shirt to Tote Project. Totes are used for projects, outreach, education and as an alternative option for customers at local stores.
- Donate family friendly T-shirts in good condition to River Keepers T-shirt to Tote Project.
- Use cloth or paper bags when shopping.
- Reuse plastic bags as many times as possible.
- Use long lasting reusable containers instead of disposable bags.
- Recycle plastic bags at recycling bins.



## T-SHIRT TO TOTE PROJECT



Plastic bags are commonly found in trees along the Red River, and collecting these bags for proper disposal is often difficult. In addition, it takes hundreds of years for a plastic bag to degrade in the landfill.

### SIMPLE WAYS TO REDUCE PLASTIC BAG USE

- Make your own bag by putting old T-shirts to use. See pattern provided on back.
- Volunteer to cut, tie, sew or label T-shirts into totes for River Keepers T-shirt to Tote Project. Totes are used for projects, outreach, education and as an alternative option for customers at local stores.
- Donate family friendly T-shirts in good condition to River Keepers T-shirt to Tote Project.
- Use cloth or paper bags when shopping.
- Reuse plastic bags as many times as possible.
- Use long lasting reusable containers instead of disposable bags.
- Recycle plastic bags at recycling bins.



# T-SHIRT TO TOTE PATTERN



1. Cut off sleeves and neckline
2. Turn T-shirt inside out
3. a) If sewing, sew bottom closed
4. b) If tying, cut strips at bottom, including along the side seam, 3 inches long about 1 inch thick. **Double tie** bottom fringes from the front and back of the shirt together. (The fringes will be hidden in the inside of the tote. If you want fringes hanging at the bottom on the outside of the tote, skip steps 2 and 4).
5. Turn right side out
6. Use!



[Training Video](#)



Pattern supplied by Moorhead Community Education

1120 28th Ave. N., Ste. B, Fargo, ND 58102  
riverkeepers.org  
701.356.8915  
Kimberly@riverkeepers.org



# T-SHIRT TO TOTE PATTERN



1. Cut off sleeves and neckline
2. Turn T-shirt inside out
3. a) If sewing, sew bottom closed
4. b) If tying, cut strips at bottom, including along the side seam, 3 inches long about 1 inch thick. **Double tie** bottom fringes from the front and back of the shirt together. (The fringes will be hidden in the inside of the tote. If you want fringes hanging at the bottom on the outside of the tote, skip steps 2 and 4).
5. Turn right side out
6. Use!

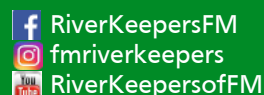


[Training Video](#)



Pattern supplied by Moorhead Community Education

1120 28th Ave. N., Ste. B, Fargo, ND 58102  
riverkeepers.org  
701.356.8915  
Kimberly@riverkeepers.org



# T-SHIRT TO TOTE PATTERN



1. Cut off sleeves and neckline
2. Turn T-shirt inside out
3. a) If sewing, sew bottom closed
4. b) If tying, cut strips at bottom, including along the side seam, 3 inches long about 1 inch thick. **Double tie** bottom fringes from the front and back of the shirt together. (The fringes will be hidden in the inside of the tote. If you want fringes hanging at the bottom on the outside of the tote, skip steps 2 and 4).
5. Turn right side out
6. Use!



[Training Video](#)



Pattern supplied by Moorhead Community Education

1120 28th Ave. N., Ste. B, Fargo, ND 58102  
riverkeepers.org  
701.356.8915  
Kimberly@riverkeepers.org

